

Cornerstone

Transformational Scholarship at Azusa Pacific University

Office of Research and Grants | Winter 2016



Faculty Spotlight

Matthew Smith

Assistant Professor, Department of English,
College of Liberal Arts and Sciences
English faculty Matthew Smith came to
APU three years ago...
(continued on page 3)

3



Alum Spotlight

Eliana Tarazon

'15 Alumna, Social Work
School of Behavioral and Applied Sciences
Albert Einstein once stated, "I have no
special talent. I am only..."
(continued on page 2)

2



Common Day of Learning

Keynote Speakers, Faculty book signing, Undergraduate Research and more...
(see page 4)

4



Calendar and Events

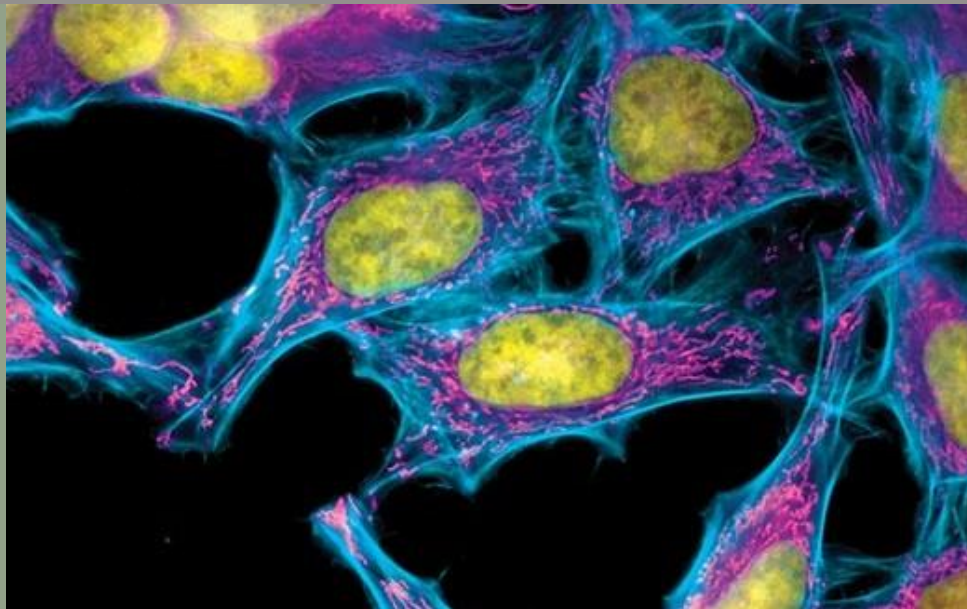
Upcoming ORG Events & Deadlines

3

Office of Research & Grants

680 Alosta Ave., Suite #115
Azusa, California 91702
626.815.2082

<http://www.apu.edu/researchandgrants/>



The "Immortal Cells" of Henrietta Lacks

Whither Common Rule Changes in Human Subject Research

Get ready, because the way research with human subjects is reviewed may soon look different. Changes to the Common Rule which could affect you are being discussed.

Common Rule refers to U.S. federal guidelines governing the protection of human subjects in research. The guidelines were published in 1991 as *The Federal Policy for the Protection of Human Subjects* and were adopted by numerous federal departments and agencies at that time. Since then, many non-federal entities have adopted the guiding principles enshrined in the Common Rule. Indeed, it is the expectation that all institutions, APU included, receiving funding from the federal government will conduct research involving human subjects consistent with the Common Rule.

So, what are the main features of the Common Rule, and what types of changes are being considered? While federal guidelines for research involving human subjects are vast and complex, the primary elements of the Common Rule pertain to requirements aimed at ensuring: a) institutions are in compliance with guidelines; b) researchers obtain and document informed consent; and c) Institutional Review Boards (IRB) have appropriate membership, adequately oversee human-subject research, and adopt acceptable record-keeping practices. The Common Rule also includes guidelines for protections of vulnerable research subjects, including pregnant women, prisoners, and minors.

(Article continued on Page 4)

Congratulations!!

Recent grants

(October 2015 – January 2016)

Chris Adams (SOT). *Youth Leadership Initiative.* Funded by Lilly Endowment, Inc. (\$599,614)

Teresa Pegors (BAS). *Sex/Gender Difference in Neural Predictors of Receptivity to Health Communication.* University of Pennsylvania (\$46,217)

Julie Pusztai (SON). *Health Promotion – Disease Prevention (HPDP): SUPPLEMENT.* Funded by Canyon City Foundation (\$3,168)

Kathleen Ruccione (SON). *COG NCTN Operations Science Leadership.* Funded by the Children’s Hospital of Philadelphia (\$7,148)

Tedd Szeto (CLAS). *California Space Grant: 2016 Aerospace Workforce Development.* Funded by the California Space Grant Consortium at University of California, San Diego (\$8,000)

Mary Wong (CLAS). *Evaluation of the Enhanced Native-Speaking English Teacher Scheme in Secondary Schools.* Funded by the Education Bureau, The Government of Hong Kong (\$178,906)

Alum Spotlight

Eliana Tarazon (‘2015)

... passionately curious.” In my opinion, research is a passionate quest for those whose curiosity has been peaked by opportunities for positive change, improvements, and possible solutions to issues they observe in this world. As an APU undergraduate social work student, my curiosity was fueled during the opportunity to conduct a yearlong research project at an internship placement during my senior year. This research focused on the use of Spanish group parent training classes as the method of delivering culturally relevant education to Latino parents about developmental disabilities, specifically autism.



I was introduced to a professor who diligently carries the torch of research. Dr. Anupama Jacob heralded the way of shepherding me into an unknown world filled with rich possibilities. My pursuit of academic excellence became a driving force that converted into passionate stabs at attempting to figure out how I could use research to benefit both the clients and families served by the internship site.

In February 2015, I had the opportunity to present this research during the Common Day of Learning. Those who attended, including Faculty Director Dr. Maximo Rossi, were especially interested in my presentation as they have had some sort of interaction with an autistic child or were unfamiliar with the diagnosis of autism. In March 2015, I competed at the annual research poster competition for undergraduate social work students hosted by the prestigious Association of Baccalaureate Social Work Program Directors (BPD) Annual Conference held in Kansas City, Missouri. I presented my findings on *Educating Latino Parents on Autism: How Effective Are Group Parent Training Classes?* The results of my research were that Spanish group parent training classes are an effective method of culturally relevant educational outreach and may support research indicating that lack of access to knowledge about autism and language are the greatest barriers to Latino parents seeking mental health services. I was the first place award recipient for an outstanding research presentation. Experiencing this at an undergraduate level has illustrated the importance of research not only meeting the needs of different populations but also informing fellow peers and professionals. I was honored to receive the Outstanding Senior Award in Social Work in April 2015, and to continue receiving support and informal mentoring from exceptional program faculty.



Although a newbie in the field of research, my appetite for it has grown. The action of research is an intimate way to fuel curiosity and gain more insight into the beautifully complex humanity God created. I am impressed with the dedication to professional and academic excellence expected at an undergraduate level in the social work program. I strongly believe students can do great things if they challenge themselves and connect with professors and mentors who help them to succeed.

“If I have seen further than other men, it is because I have stood on the shoulders of giants.”

Isaac Newton





Faculty Spotlight

... motivated by his view of APU's uniqueness among Christian universities in fostering discipline-leading scholarship while offering a small-college learning environment.

In addition to teaching undergraduate courses, Dr. Smith teaches in the new English M.A. program and Honors College. He is Associate Editor of the academic journal *Christianity & Literature*, currently housed at APU.



Like many scholars in humanities, Dr. Smith strives to find meaning in human endeavors. He is convinced clues to understanding modern society are found in cultural shifts that occurred in the 1500-1600s, a time known as the Early Modern period. His recent work materializes in a monograph entitled *Stage, Cathedral, Wagon, Street: Theatricality and the Performing Arts in Protestant England*. This project brings together diverse performance forms in early England, including the commercial plays of Shakespeare, public sermons, biblical pageants, state ceremonies, and popular ballads sung in the streets. Dr. Smith terms these the "performing arts" of the early modern period and likens them to forerunners of what today is called "media."

His dissertation, *Stage, Cathedral, Wagon, Street* won the prestigious 2012 J. Leeds Barroll Prize which is the Shakespeare Association of America's award for the best annual dissertation. The project was also awarded a coveted Francis Bacon Fellowship to spend a semester at the Huntington Library to consult rare books and manuscripts important to his research. His projects have been funded by grants from the University of Southern California, the Early Modern Studies Institute, and the Renaissance Society of America.

His current work investigates convergence of classical tragedy with Christian liturgy and festival during the Protestant Reformation. This research was supported by an APU SURE (Scholarly Undergraduate Research Experience) grant allowing him to bring an undergraduate student into this unique project.

This spring, Dr. Smith will give the plenary address at a University of California Irvine event focusing on dancing on Shakespearean stages and, specifically, the curious fact that bleak tragedies were typically followed by a country "jig" set to ballad music. In collaboration with co-author, Julia Lupton, Associate Dean for Research in the UCI School of Humanities, the talk will be published as an innovative multimedia essay by the University California Press.

But that's not all! This spring, Dr. Smith will lead a seminar entitled *The Face-to-Face in Shakespearean Drama* at the Shakespeare Association of American annual meeting in New Orleans. He will convene sixteen internationally recognized scholars to discuss scenes of intimacy in commercial theater, asking how face-to-face performances help us understand human relationships.

Dr. Smith's zeal for scholarship and teaching does not overshadow other life priorities. He is the proud father of three children, Cecily, Ambrose, and Richard. Among his 'bucket list' items is a trip to Rome with five-year old Cecily when she turns sixteen to visit the effigy of her namesake, Saint Cecilia, in the catacombs. Wishing Dr. Matthew Smith success on this goal as well as success in his many professional pursuits during 2016.



"If research and engagement in our primary discipline is an active part of our lives, it enlivens every aspect of our interaction with our students. The farther we get away from active engagement with our discipline, we run the risk of extinguishing the fire within our students and ourselves."

Stephen Johnson, DMA, Dean of College of Music and the Arts

Calendar & Events

Events

- Upcoming Sabbatical Leave Lunches**
 February 10, 2016 – Julia Underwood
 February 18, 2016 – Thomas Allbaugh
 February 24, 2016 – Matthew Elofson
 March 2, 2016 – Evelyn Yee
 March 24, 2016 – Laurie Schreiner
 March 30, 2016 – Kent Anderson Butler

Common Day of Learning

February 23, 2016

Research Ethics Deadlines

IRB (human subjects research)

February 3, 2016: Full Board Review
Application deadline for February 17 meeting

March 2, 2016: Full Board Review
Application deadline for March 16 meeting

IACUC (animal research)

February 10, 2016: Protocol or amendment deadline for February 17 meeting

March 9, 2016: Protocol or amendment deadline for March 16 meeting

Consultations

Dr. John Trent Writing Consultation

February 16-17, 2016

April 13-14, 2016

Workshops

Grant Training:

February 19, 2016: Grant Budget and Expense Monitoring: What is Allowed?

February 26, 2016: NSF Grants: Tips and Strategies

March 18, 2016: Funding Opportunities

March 18, 2016: Expectations for Grant-Related Documentation Storage and Inventory

Responsible Conduct of Research Training:

March 3, 2016: RCR series: Part I

March 31, 2016: RCR series: Part II

(Whither Common Rule article, continued)

In September 2015, the Notice of Proposed Rulemaking (NPRM) was published inviting the research community to comment on several proposed changes to the Common Rule. A few illustrative changes that could impact APU researchers are outlined below.

One proposed change would adjust informed consent regulations so as to enhance transparency and better assure human participants are, indeed, adequately aware of the nature of the research. One specific recommendation would require informed consent documents be posted on a federal website for public display before research commences. A second area of proposed change would expand activities excluded from IRB review compared to what is currently required. The affected areas are those that: a) would not be considered as research; b) are low risk; and c) have protection through other channels similar to what IRB affords. The first of these three categories is especially intriguing since it would explicitly exclude from IRB oversight studies aimed at making program improvements. A third proposed change to the Common Rule would mandate institutions cooperate so that any research in the United States involving human subjects be subject to a single IRB review. Currently, many projects require multiple IRB approvals. For example, a researcher from institution A who does a study at institution B often is required to obtain IRB approval from both A and B. Under changes proposed in the NPRM, this would no longer be the case.

To be sure, new guidelines are not yet in force, but were under discussion from September 8 through December 7, 2015. The final outcome is pending. Nevertheless, some have expressed reservations about the proposed changes. For example, the influential Public Responsibility in Medicine Research (PRIM&R) organization identified concerns with the proposed changes to the Common Rule in a 17-page letter dated January 6, 2016, to the director of the Department of Health and Human Services Office for Human Research Protection. PRIM&R summarizes its concerns as, "The NPRM includes proposals that reflect inadequate consideration of important ethical, practical, and logistical implications, for example those related to the requirement for 'broad consent.' Key proposals, such as the mandate for single IRB review, rest on a scant evidence-base and apply untested theories."

The above just touches on the full set of changes indicated by the NPRM and concerns some have raised about these proposed changes. For further reading, please see <http://www.nejm.org/doi/full/10.1056/NEJMp1512205> and <http://www.fic.nih.gov/News/GlobalHealthMatters/september-october-2015/Pages/hhs-revisions-regulations-research-participants.aspx> along with the numerous links that can be accessed through these sites.

Fulbright Events & Deadlines

- ◆ Fulbright Grant: Information Sessions in Ronald Board Room (East Campus)
 - February 26, 2016 (2:30-3pm)
 - March 22, 2016 (3-4pm)
 - April 21, 2015 (4-5pm)
- ◆ Fulbright Grant: Application Deadline
September 28, 2016



Common Day of Learning

February 23, 2016

CDL is featuring:

Keynote Speakers at Chapel APU Deans!!

11:00 a.m.-12:00 noon
Felix Event Center



Jennifer Walsh
College of Liberal Arts and Science



Robert Welsh
School of Behavioral and Applied Sciences



Stephen Johnson
College of Music and the Arts

Undergraduate Research

Poster session 1:00-2:15 p.m.
Duke Lobby
Oral presentations throughout the day

Celebration of Scholarship: APU Faculty Book Signing

12:00-2:00 p.m.
Kresge Plaza (front of Heritage Café)

APU authors will be there!
Celebrate APU scholarship
with 24 recent faculty book
authors!



Student- and Faculty-Led Presentations

Session 1: 9:30-10:45 a.m.
Session 2: 1:00-2:15 p.m.
Session 3: 2:30-3:45 p.m.
Duke Academic Complex

CDL webpage: <http://www.apu.edu/cdl/>
CDL Director: Maximo Rossi